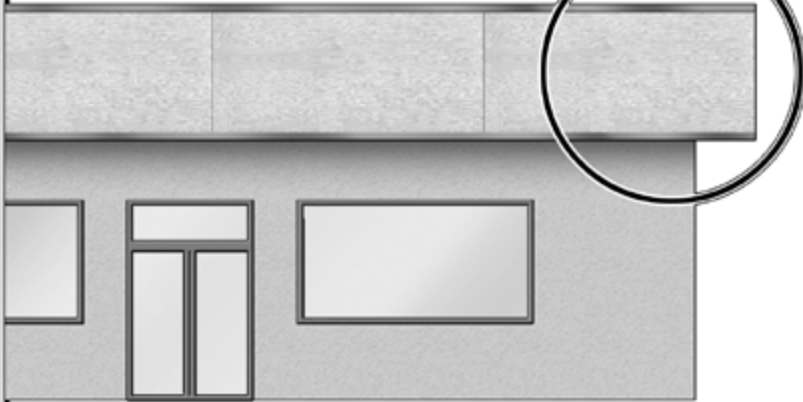


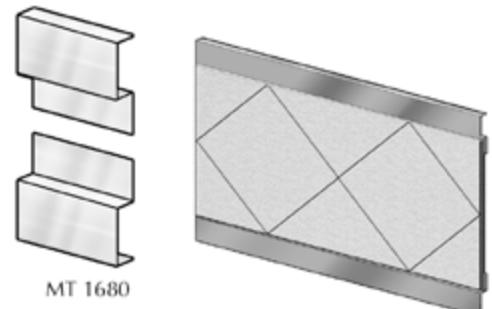
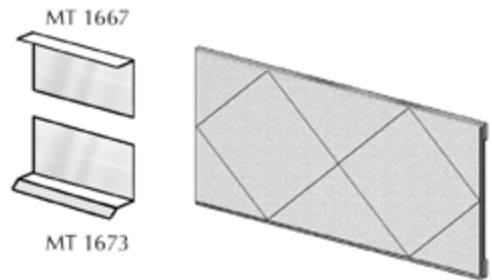
## 1.1 • Installing on a Mansard or Smooth Surface

### STEP 1:

Determine if flashing is necessary. Trim is recommended, but the configuration will need to be optimized for each project.



### Trim 1: Angle Flashing



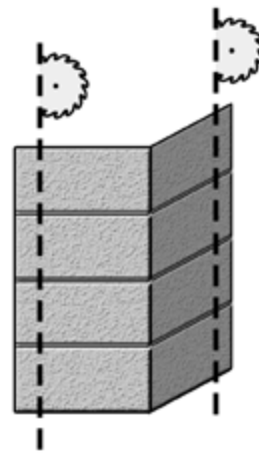
### Trim 2: Reverse J-Trim

## 1.2 • Corner Configuration

Installing STUCCO CLAD panels require measuring the building side and then first setting up a worksheet on centering the panels and then adjusting the amount of panels so that the left and right panels are within 1 - 3 ft from each corner.

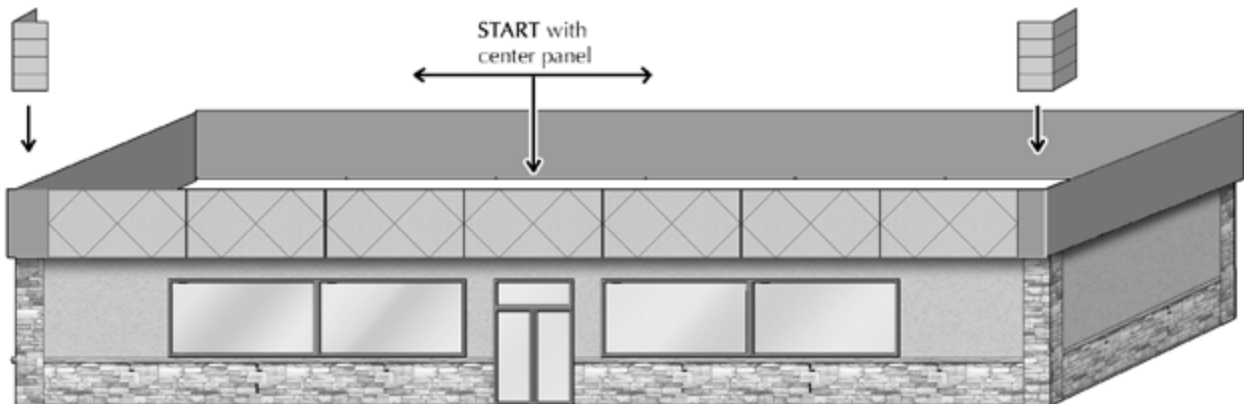
In general, we design the corners longer than what will be needed so that they can be cut to optimize the interface with the main panel. Cutting the corner should be done so that they will cut to coordinate with optimizing how much of the pattern is to be cut.

Then install the corners and cut the main panels, optimizing where to cut the pattern and making sure that both sides of the pattern is balanced.



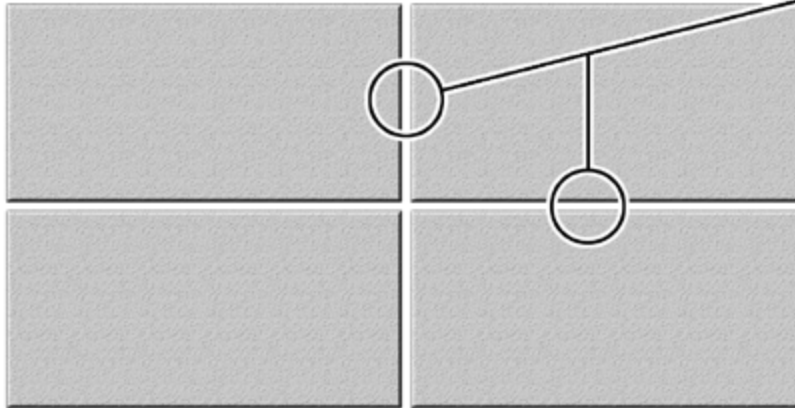
Corners can be cut to fit the remaining space at the end of the row of *Stucco Clad* panels.

Cut corners should then have the edges painted with the touch up paint kit.



## 1.3 • Installing Multiple Levels of Stucco Clad

When applying multiple levels of Stucco Clad it is important to address the gaps between panels. When applied in warm weather, a gap may not be needed, but when applied in colder weather, a gap between panels will be needed to accommodate expansion of the panels when the temperature does warm up. The gap should be caulked with a silicon or polyurethane sealant, which is typically supplied with the project.



Gap Detail

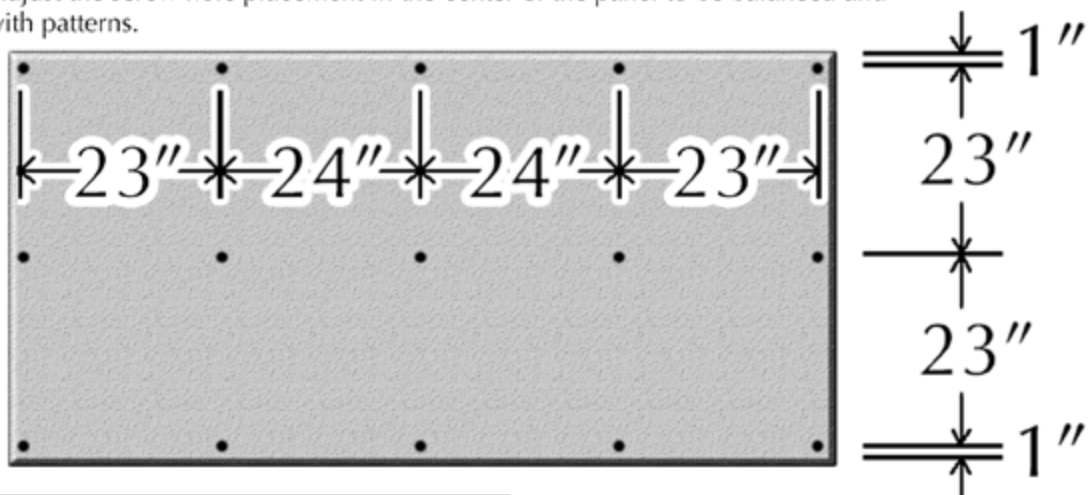
Temperature Dictates Gap

Ambient Temp	Joint Gap
100°	Tight
50° - 100°	1/8"
< 50°	3/16"

## 1.4 • Marking Screw Placement (A) or Nail Gun (B)

### (Option A)

Mark screw holes every 2 ft around the perimeter and within the center of the panel per the illustration. Adjust the screw hole placement in the center of the panel to be balanced and coordinate with patterns.

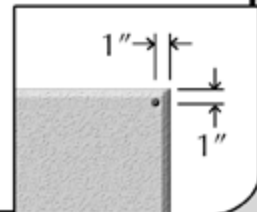


### (Option B)

A nail gun can be used for attaching the panel to a solid wood surface.



When marking for placement on the perimeter of the Stucco Clad panel make sure to mark 1" in from the edge.



## 1.5 • Adhesive

Apply Loctite PL Polyurethane adhesive generously to the **back** of the panel. (Gluing panels is recommended and can be done if there is no building wrap)



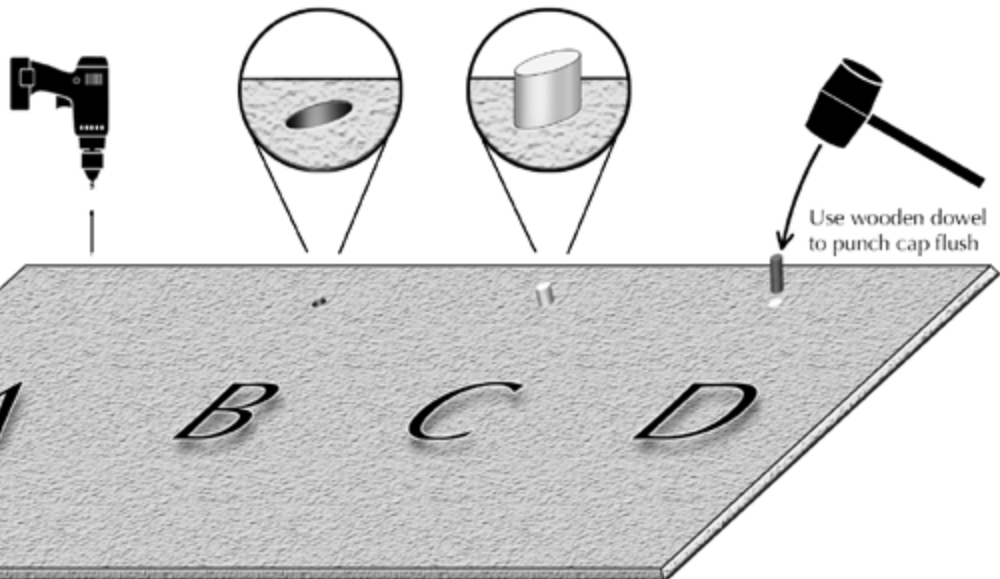
## 1.6 • Installing Panel To Building

### STUCCO CLAD INSTALLATION KIT:

Includes special self-drilling screws, plugs, and a depth control screw driver.



The **Stucco Clad** system has a customized screw & plug kit which is designed to properly secure the panel to the wall and hide the screw holes in the process.



**A:** Use the special self-drilling screws that is supplied with the kit.

**B:** The screw will drill through the panel and also drills the proper size hole for the plug.

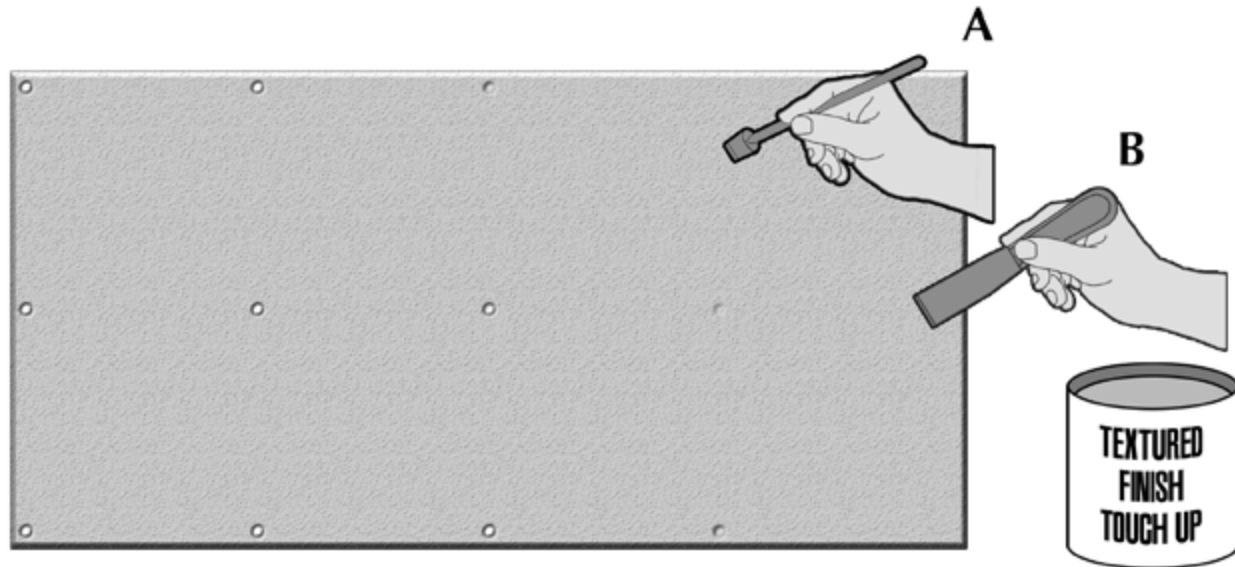
**C:** Place the plug in the drilled hole above the screw.

**D:** Carefully hammer the plug level with the surface of the **Stucco Clad** panel's surface.

There are two options available when doing the touch up process.

### 1.7 • (A) One Step Touch Up Process

Using a small brush (A) or a painter's palet knife (B, - recommended) carefully apply a small amount of textured paint over the plug and then "feathering" it out with a small brush so that it blends in with the rest of the panel.



### 1.7 • (B) Two Step Touch Up Process

In some panels the stucco texture is top coated with an additional coat of paint to insure uniformity. If this is the case then an additional touch up paint bottle will be added to the touch up kit.

