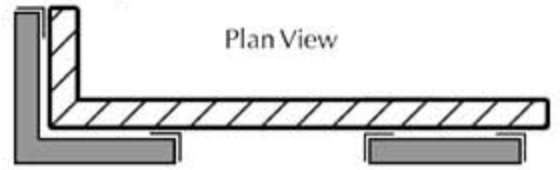


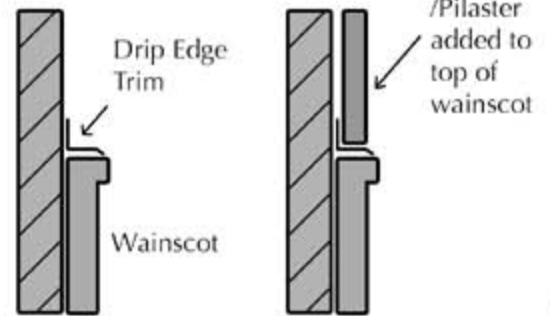
R.1 • Accent Corners/Pilasters On Top of Wainscot

Option 1:

Placement of Accent Corners & Pilasters *on top* of the wainscot panels.



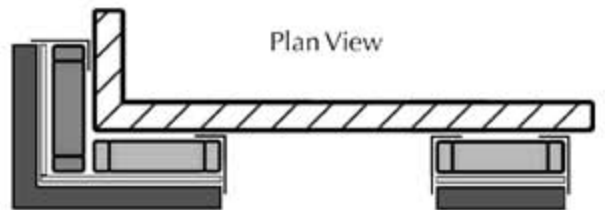
Side View



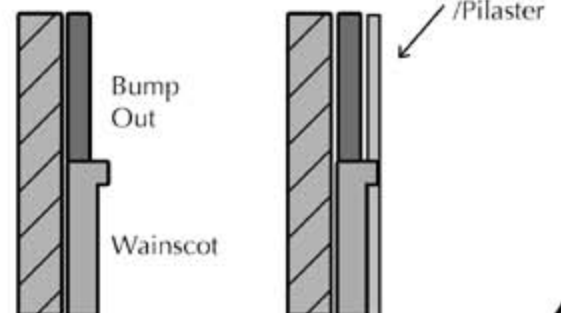
R.2 • Accent Corners & pilasters Bump Out

Option 2:

Accent Corners & Pilasters are bumped out *over* the wainscot panels.



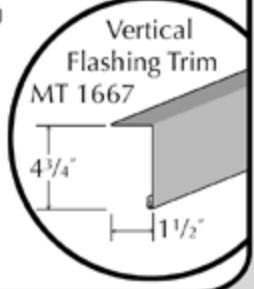
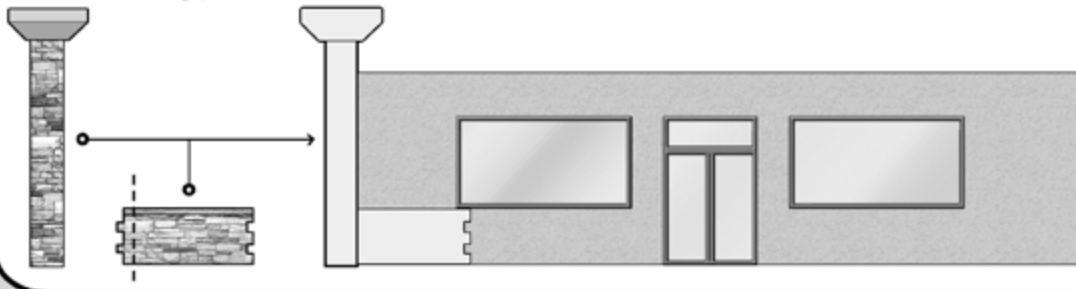
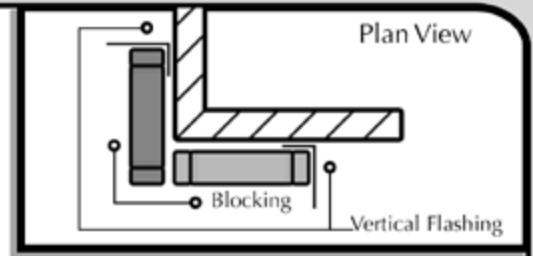
Side View



1.1 • Planning

STEP 1:

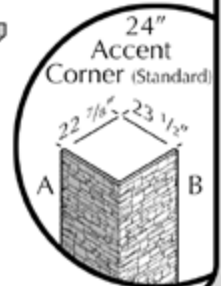
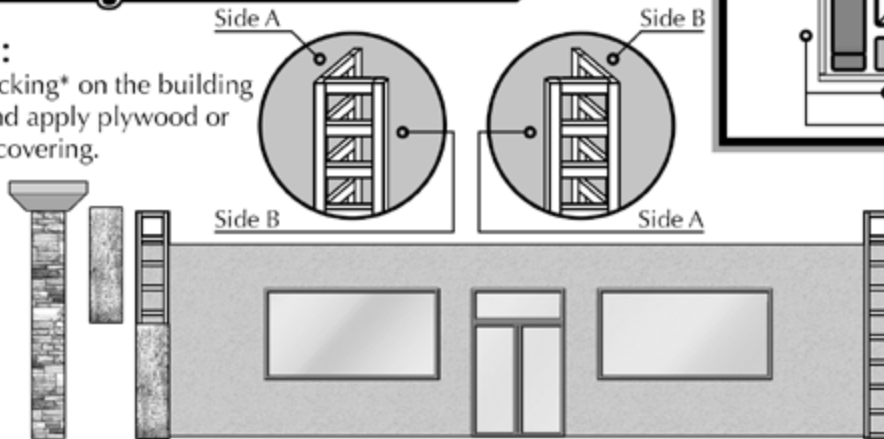
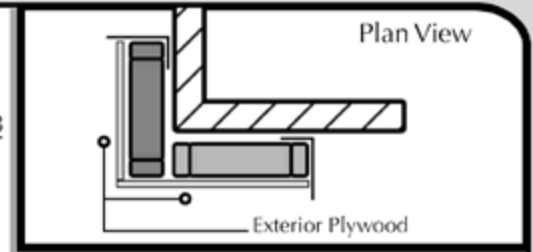
Accent Corners are available in custom sizes ranging from 12" to 48". However, our standard 24" corners are molded at a specific size - so note the left (A) and right (B) dimensions and adjust the blocking accordingly.



1.2 • Framing

STEP 2:

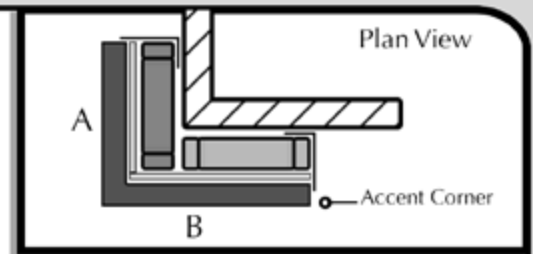
Install blocking* on the building corners and apply plywood or synthetic covering.



1.3 • Installation

STEP 3:

Install the Accent Corners over the covered blocking.

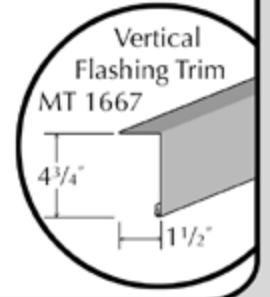
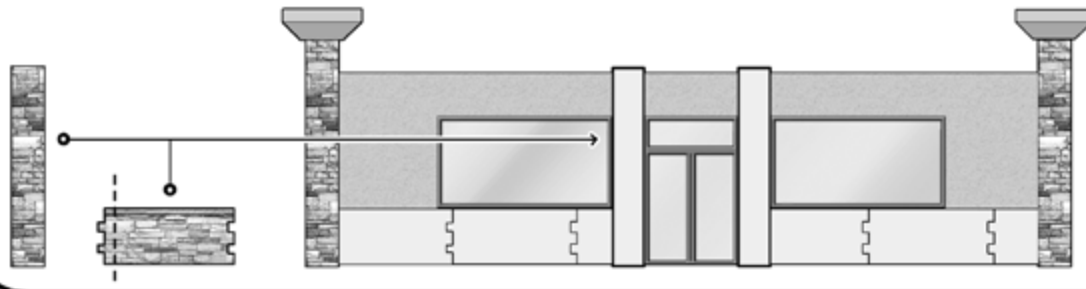
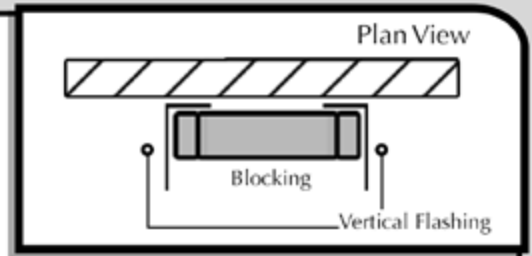


*(Note - Dimensions on the 24" Accent Corners are reversed between the left (A) and right (B) sides.)

2.1 • Planning

STEP 1:

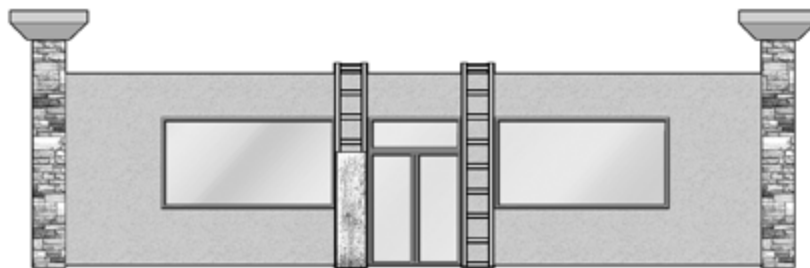
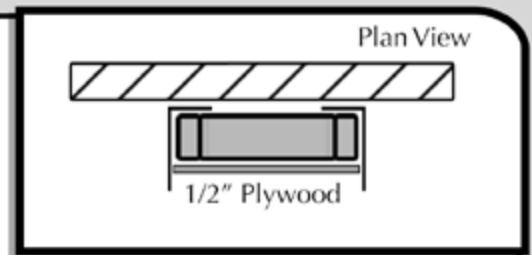
Pilasters are available in various styles and can help accent the appearance of your building in addition to Accent Corners and Wainscot paneling.



2.2 • Framing

STEP 2:

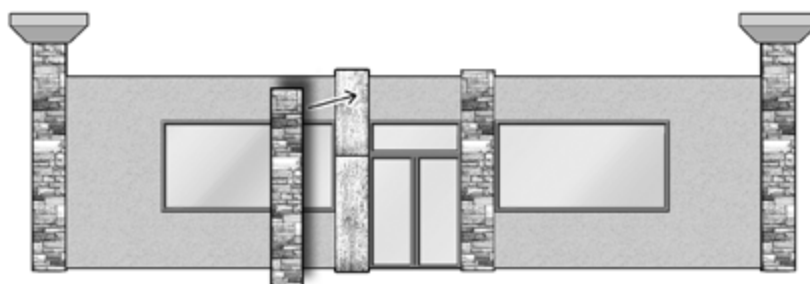
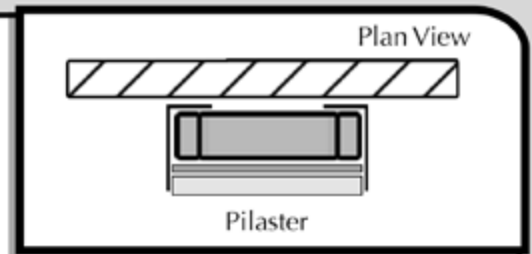
Install blocking on the building and apply plywood or synthetic covering.



2.3 • Installation

STEP 3:

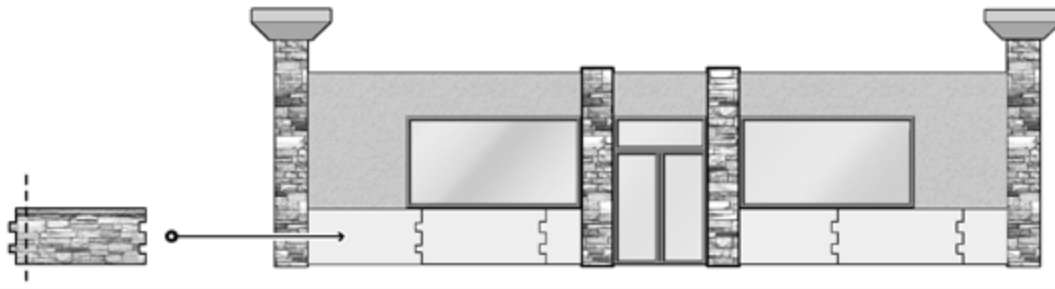
Install the Pilasters over the covered blocking.



3.1 • Planning

STEP 1:

Determine placement of wainscot panels. (Panels will be cut where they meet corners, pilasters, and door terminations)



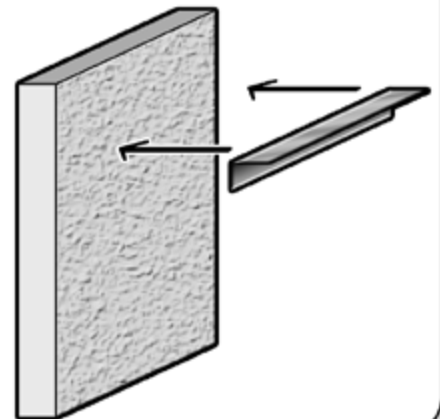
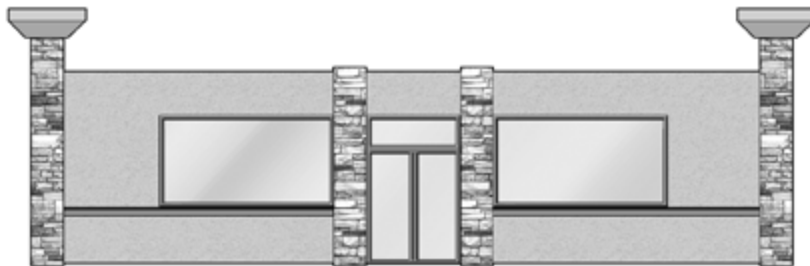
Flashing Trim

Wainscot Panel

3.2 • Flashing

STEP 2:

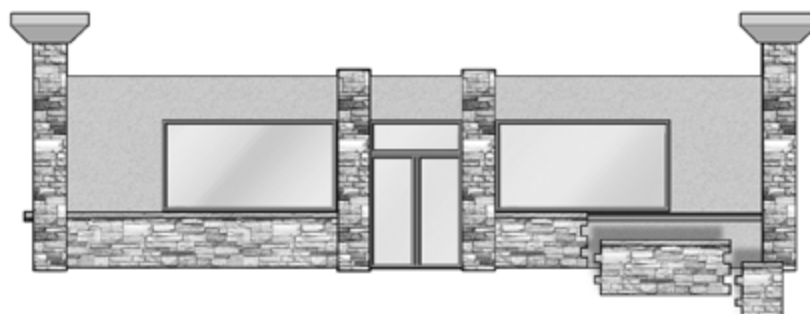
Add top flashing to wall.



3.3 • Installation

STEP 3:

Install the wainscot panels.



Plan View

